

ÉLIANE

Sarrau à encolure illusion cache-cœur avec découpes bretelles au devant et au dos pour un ajustement facile. Empiècements au dos et à l'épaule devant, manche courte, élastique au dos, fentes aux côtés et de grandes poches doubles appliquées au devant.

27

tailles - sizes

Mock wrap neck scrub top with princess seams, a style easy to adjust achieve a perfect fit. Short sleeves, yokes, elastic in the small of the back and side vents for a shaped, but comfortable top. Two double patches pockets big enough everything you need to carry.

MESURES DU CORPS (FILLES) - BODY MEASUREMENTS (GIRLS)

Âge approximatif - Approximate age		2	3	4	5	6	7	8	9	10	11	12	13
Tailles européennes - European sizes		92	98	104	112	119	127	135	142	146	150	152	155
TAILLE JALIE - JALIE SIZES		F	G	H	I	J	K	L	M	N	O	P	Q
	1 TOUR DE POITRINE FULL BUST	21" 53 cm	22" 56 cm	23" 58 cm	24" 61 cm	25" 64 cm	26" 66 cm	27" 69 cm	28" 71 cm	29" 74 cm	30" 76 cm	31" 79 cm	32" 81 cm
	2 TOUR DE TAILLE NATURAL WAIST	20" 51 cm	20 1/2" 52 cm	21" 53 cm	21 1/2" 55 cm	22" 56 cm	22 1/2" 57 cm	23" 58 cm	23 3/4" 60 cm	24 1/2" 62 cm	25 1/4" 64 cm	25 3/4" 66 cm	26 1/2" 67 cm
	3 TOUR DES HANCHES HIPS (FULLEST)	22" 56 cm	23" 58 cm	24" 61 cm	25" 64 cm	26" 66 cm	27" 69 cm	28" 71 cm	29 1/2" 74 cm	30 1/2" 78 cm	32" 81 cm	33" 84 cm	34 1/2" 87 cm
	4 TRONC (DEVANT+DOS) TORSO (FRONT+BACK)	35" 89 cm	37" 94 cm	38 1/2" 98 cm	40" 102 cm	41 1/2" 105 cm	43 1/4" 110 cm	45" 114 cm	47" 119 cm	49" 124 cm	51" 130 cm	53" 135 cm	55" 140 cm

TISSU REQUIS - YARDAGE

42" 106 cm	UNI (UN SEUL TISSU) SOLID (ONE FABRIC)	1 1/4 yd	1 1/4 yd	1 1/2 yd	1 1/2 yd	1 1/2 yd	1 3/4 yd	1 3/4 yd	1 3/4 yd	1 3/4 yd	2 yd	2 1/4 yd	2 1/4 yd	
		1.10 m	1.15 m	1.25 m	1.30 m	1.35 m	1.40 m	1.50 m	1.50 m	1.55 m	1.65 m	1.95 m	2 m	
42" 106 cm	DEUX TONS TWO-TONE	TISSU PRINCIPAL MAIN FABRIC	1 yd	1 yd	1 yd	1 yd	1 1/4 yd	1 1/4 yd	1 1/4 yd	1 1/4 yd	1 1/4 yd	1 1/4 yd	1 1/4 yd	1 1/2 yd
		0.85 m	0.90 m	0.90 m	0.95 m	1.00 m	1.05 m	1.05 m	1.10 m	1.10 m	1.15 m	1.15 m	1.25 m	
42" 106 cm	TISSU CONTRASTANT CONTRAST FABRIC	1/2 yd	1/2 yd	3/4 yd	3/4 yd	3/4 yd	3/4 yd	3/4 yd	3/4 yd	3/4 yd	1 yd	1 1/4 yd	1 1/4 yd	
		0.45 m	0.45 m	0.50 m	0.50 m	0.55 m	0.55 m	0.55 m	0.65 m	0.65 m	0.70 m	1.00 m	1.00 m	

TISSUS CONSEILLÉS Étoffe tissée légère, popeline souple, cotonnades, poly/coton, tissu à courtepoinete.
RECOMMENDED FABRICS Lightweight woven fabric like soft poplin, broadcloth, poly/cotton, quilting cotton.

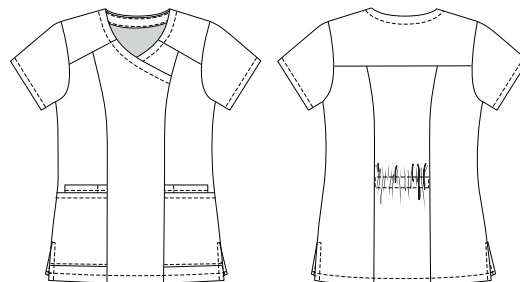
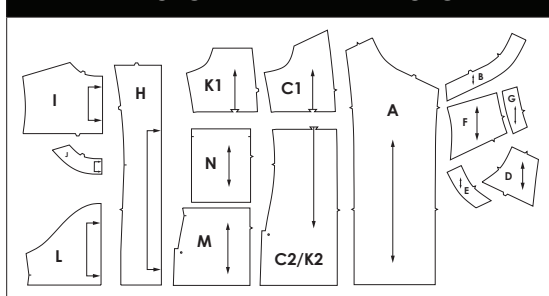
MESURES DU CORPS (FEMMES) - BODY MEASUREMENTS (WOMEN)

Prêt-à-porter APPROX. RTW size	4	6	7	8	9	10	11	12	13	14	15	16	18	20	22
Tailles euro - European sizes	34	36	37	38	39	40	41	42	43	44	45	46	48	50	52
TAILLE JALIE - JALIE SIZES	R	S	T	U	V	W	X	Y	Z	AA	BB	CC	DD	EE	FF
1 TOUR DE POITRINE FULL BUST	33" 84	34" 86	35" 89	36" 91	37" 94	38" 97	39" 99	40" 102	41" 104	42" 107	43" 109	44" 112	46" 117	48" 122	50" 127
2 TOUR DE TAILLE NATURAL WAIST	27" 69	28" 71	29" 74	30" 76	31" 79	32" 81	33" 84	34" 86	35" 89	36" 91	37" 94	38" 97	40" 102	42" 107	44" 112
3 TOUR DES HANCHES HIPS (FULLEST)	36" 91	37" 94	38" 97	39" 99	40" 102	41" 104	42" 107	43" 109	44" 112	45" 114	46" 117	47" 119	49" 124	51" 130	53" 135
4 TRONC (DEVANT+DOS) TORSO (FRONT+BACK)	57" 145	59" 150	60" 152	61" 155	61 3/4" 157	63" 160	63 1/2" 161	64 1/2" 164	65 1/4" 166	66" 168	66 1/2" 168	66 1/2" 169	67" 170	67 1/2" 171	68 " 173

TISSU REQUIS - YARDAGE

DEUX TONS TWO-TONES	UNI (UN SEUL TISSU) SOLID (ONE FABRIC)	2 1/4 yd	2 1/2 yd	2 1/2 yd	2 1/2 yd	2 1/2 yd	2 1/2 yd	2 1/2 yd	2 3/4 yd	2 3/4 yd	2 3/4 yd	2 3/4 yd	2 3/4 yd	2 3/4 yd	3 1/2 yd	3 1/2 yd
	2.05 m	2.10 m	2.15 m	2.15 m	2.20 m	2.20 m	2.20 m	2.20 m	2.35 m	2.40 m	2.40 m	2.40 m	2.40 m	2.40 m	3 m	3 m
	TISSU PRINCIPAL MAIN FABRIC	1 1/2 yd	1 1/2 yd	1 1/2 yd	1 1/2 yd	1 1/2 yd	1 1/2 yd	1 1/2 yd	1 1/2 yd	1 3/4 yd	1 3/4 yd	1 3/4 yd	1 3/4 yd	1 3/4 yd	1 3/4 yd	1 3/4 yd
1.30 m	1.30 m	1.35 m	1.35 m	1.35 m	1.35 m	1.35 m	1.35 m	1.35 m	1.40 m	1.40 m	1.40 m	1.40 m	1.40 m	1.40 m	1.40 m	
TISSU CONTRASTANT CONTRAST FABRIC	1 1/4 yd	1 1/4 yd	1 1/4 yd	1 1/4 yd	1 1/4 yd	1 1/4 yd	1 1/4 yd	1 1/4 yd	1 1/2 yd	1 1/2 yd	1 1/2 yd	1 1/2 yd	1 1/2 yd	1 1/2 yd	1 3/4 yd	2 yd
1.05 m	1.05 m	1.05 m	1.05 m	1.05 m	1.10 m	1.10 m	1.10 m	1.10 m	1.20 m	1.20 m	1.20 m	1.20 m	1.20 m	1.20 m	1.50 m	1.65 m

PIÈCES - PATTERN PIECES



MERCERIE - NOTIONS

ÉLASTIQUE 2 cm 3/4" ELASTIC	F - R	S - FF
	6"	8"
ENTOILAGE THERMOCOILLANT (SI LE TISSU EST FIN OU EXTENSIBLE) FUSIBLE INTERFACING (FOR LIGHTER WEIGHT / STRETCH FABRICS)	F - FF	
	6"	15 cm

PRÊT À COUDRE // READY TO SEW
ressources de couture (1 cm / 3/8") incluses dans le patron
1 cm / 3/8" seam allowances included in the pattern



1703882



© 2018 LES PATRONS JALIE INC.
www.jalie.com
IMPRIMÉ AU CANADA / PRINTED IN CANADA