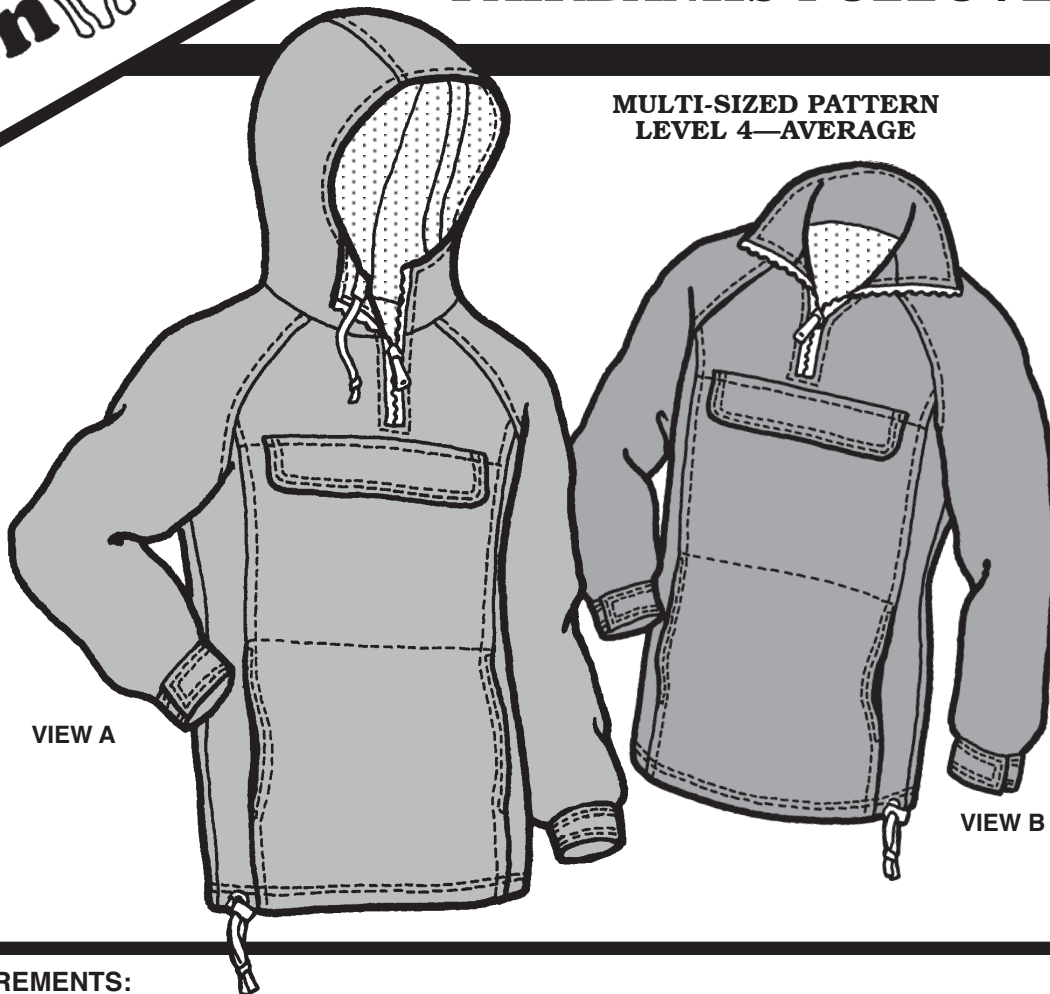


**WOMEN'S  
FAIRBANKS PULLOVER**

**MULTI-SIZED PATTERN  
LEVEL 4—AVERAGE**



VIEW A

VIEW B

**MEASUREMENTS:**

**IMPORTANT:** When selecting pattern size, take measurements over clothing that will be worn under finished garment.

SIZE	6	8	10	12	14	16	18
Bust .....	30 <sup>1</sup> / <sub>2</sub> "	31 <sup>1</sup> / <sub>2</sub> "	32 <sup>1</sup> / <sub>2</sub> "	34"	36"	38"	40"
Waist .....	23"	24"	25"	26 <sup>1</sup> / <sub>2</sub> "	28"	30"	32"
Hip .....	31"	33 <sup>1</sup> / <sub>2</sub> "	34 <sup>1</sup> / <sub>2</sub> "	36"	38"	40"	42"
Back Waist Length	15 <sup>1</sup> / <sub>2</sub> "	15 <sup>3</sup> / <sub>4</sub> "	16"	16 <sup>1</sup> / <sub>4</sub> "	16 <sup>1</sup> / <sub>2</sub> "	16 <sup>3</sup> / <sub>4</sub> "	17"

**FABRIC:**

VIEW A:	6-14	16-18	
Outer Fabric .....	60"	2	2 <sup>1</sup> / <sub>8</sub>
.....	45"	2 <sup>3</sup> / <sub>4</sub>	3 <sup>1</sup> / <sub>8</sub>
Lining .....	60"	2 <sup>3</sup> / <sub>8</sub>	2 <sup>3</sup> / <sub>8</sub>
.....	45"	2 <sup>3</sup> / <sub>4</sub>	3 <sup>1</sup> / <sub>8</sub>
<b>VIEW B:</b>			
Outer Fabric .....	60"	2	2 <sup>1</sup> / <sub>8</sub>
.....	45"	2 <sup>3</sup> / <sub>8</sub>	3 <sup>1</sup> / <sub>8</sub>
Lining .....	60"	2 3/8	2 <sup>3</sup> / <sub>8</sub>
.....	45"	2 <sup>3</sup> / <sub>4</sub>	3 <sup>1</sup> / <sub>4</sub>
<b>VIEW A or B:</b>			
Insulation .....	60"	2 <sup>1</sup> / <sub>4</sub>	2 <sup>1</sup> / <sub>4</sub>

**NOTIONS:**

- 2 ..... 9" Non-Separating Zippers
- 3 yd ..... 1/8" Cord or Shock Cord
- 1 pkg ..... 1/4" Grommets
- 1/8 yd..... 3/4" Velcro
- 1/4 yd..... 2" Velcro
- 1 ..... Toggle Lock
- 1 ..... All-polyester Thread

**SUGGESTED FABRICS:**

**Outer Shell**—Lightweight Waterproof, Waterproof Breathable, or Water Repellent fabric.  
**Lining**—Hi-count Nylon Taffeta plus Thinsulate™; or PolarTec®; or Quilted Lining.  
**Insulation**—Thinsulate™.